

SCHOOL DISTRICT #60 (Peace River North)  
Committee of the Whole  
**Regular Meeting**  
Tuesday, April 7, 2026 @ 2:30 p.m.  
**AGENDA**

**Education**

1. **Education Update**  
*Stephen Petrucci, Superintendent*  
  
Framework Presentations (Attachments)
  - a) Wonowon Elementary School  
*Jaclyn Gieni, Administrator*
  - b) Facilities Department Presentation  
*Kamal Sraw, Director of Facilities*

**Governance**

2. **Board Meeting Follow Up Questions/Discussion**  
*Helen Gilbert, Board Chair*

**Operations**

3. **Operations Report (Attachment)**  
*Angela Telford, Secretary-Treasurer*

## **Wonowon School Framework for Enhancing Student Learning 2025-26**

### **School Context:**

Wonowon School is a rural school located 90 kilometers north of Fort St. John on the historical Alaska Highway. The school supports students from grade levels of Kindergarten to grade 9.

Wonowon School has an off-site 0.6 administrator, a head teacher, a prep and learning resource teacher, and 4 classroom teachers. The school has three Educational Assistant and receives additional support services from Learning Services. These services from district teaching staff include English Language Learning, Speech-Language Support, Technology Services, Library Services, Curriculum Coaching and Mentoring.

Approximately 90% of our student population are English Language Learners from families whose first language is Russian or Ukrainian. The curriculum implementation is diverse to meet their needs. Students receive 5 years of ELL support from the Learning Resource Teacher and classroom instruction.

The school community is very close-knit, with large extended families. Students spend a great deal of time together outside of school. This closeness creates a unique dynamic throughout the school and older students have a strong influence over the younger students. The community and PAC are very supportive of the school and are willing to work with staff for the benefit of the children and the school.



## Strengths Celebrations and Challenges

Strengths	Celebrations	Challenges
<ul style="list-style-type: none"> <li>• Athletic</li> <li>• Culture/Family Ties</li> <li>• Student Leadership</li> <li>• Creative Access</li> </ul>	<ul style="list-style-type: none"> <li>• New School</li> <li>• Attendance</li> <li>• Staff Retention/Recruitment</li> <li>• Bus Enrollment</li> </ul>	<ul style="list-style-type: none"> <li>• Competitive/sportsmanship</li> <li>• Welcoming/inclusion</li> <li>• Social integration</li> <li>• Coverage/TTOC</li> <li>• Location - travel</li> <li>• Parent involvement</li> <li>• Parent support - value of school</li> </ul>
<ul style="list-style-type: none"> <li>• SEL Goal: To improve adult-to-student relationships so they feel they have a trusted adult in the building.</li> </ul>	<ul style="list-style-type: none"> <li>• Evidence Through student centered work</li> </ul>	<ul style="list-style-type: none"> <li>• Data: MDI</li> <li>• Check In's - Brief</li> <li>• Conversations with 5 students</li> </ul>

## Wonowon School

**Mission:**

To promote responsible student leaders who work towards their own successes in all areas of life.  
To become honest, respectful, and contributing members of the community.

Goals	Rationale	What supporting educational programs, strategies and structures	What Pro D are we engaged in?	What evidence are we collecting to support our progress on our goals?
<b>Human And Social</b>	<ul style="list-style-type: none"> <li>• To develop self regulation skills to ensure all students become confident, caring, and empathic members of our school community</li> <li>• Student voice and Leadership</li> </ul>	<p><b>School Wide implementation of:</b></p> <ul style="list-style-type: none"> <li>• Positive Behavior</li> </ul> <p><b>Support: Gotchas;</b></p> <ul style="list-style-type: none"> <li>• Leadership Club</li> <li>• Classroom meetings</li> <li>• Strength based Assemblies</li> <li>• Self-Identity</li> <li>• Variety of UDL</li> <li>• Ready-Set-Learn</li> <li>• K Transition</li> <li>• Social Emotional Learning Lessons</li> <li>• Classroom Champions</li> </ul>	<p><b>On going:</b></p> <ul style="list-style-type: none"> <li>• Activities/lessons to teach expected behaviors.</li> <li>• School Wide - Assembly</li> <li>• Collaboration Time</li> <li>• Resources SEL</li> <li>• WITS</li> </ul>	<p><b>Tracking:</b></p> <ul style="list-style-type: none"> <li>• School money</li> <li>• Lessons taught</li> <li>• Office referrals</li> <li>• Create a scene to display</li> <li>• Positive behaviors</li> <li>• Self assessments</li> <li>• Classroom rewards</li> </ul>

**Alignment of allocations with this goal**

- Resources/Supplies \$5,000
- Collaboration \$1,000

- SEL \$5,000
- Support Staff

Travel \$5,000

## Wonowon School

**Mission:**

To promote responsible student leaders who work towards their own successes in all areas of life.  
To become honest, respectful, and contributing members of the community.

Goals	Rationale	What supporting educational programs, strategies and structures	What Pro-D are we engaged in?	What evidence are we collecting to support our progress on our goals?
<b>Intellectual</b>	<b>Literacy:</b> <ul style="list-style-type: none"> <li>• To increase students expressive and receptive language skills to enable them to understand and communicate appropriately.</li> <li>• Student Retention</li> </ul>	<b>Learning Centers: As needed-</b> <ul style="list-style-type: none"> <li>• Jolly Phonics</li> <li>• Talking Tables</li> <li>• Word work daily- Heggerty</li> <li>• Writing Without Tears</li> <li>• Model and teach 5Ws and questioning strategies</li> <li>• Opportunities to verbal demonstrate understanding throughout the day (A/B partners; buddy conversations</li> <li>• EET pre-teach vocabulary</li> <li>• Reading and Writing Power</li> <li>• Story Work Shop</li> <li>• Centers</li> <li>• Communakit</li> </ul>	<ul style="list-style-type: none"> <li>• Collaboration to learn Reading Assessments</li> <li>• Scholastics Language foundations</li> <li>• Sign Language</li> <li>• Coaching Support from District Staff</li> <li>• Itinerants and School LA and ELL teacher.</li> <li>• EET</li> </ul>	<ul style="list-style-type: none"> <li>• Improved outcomes on ELL and district reading assessments,</li> <li>• PM Benchmarks</li> <li>• Home reading</li> <li>• Joy of reading</li> <li>• Observation language</li> <li>• Spaces - sharing</li> <li>• WhatsApp -Sharing</li> </ul>

**Alignment of allocations with this goal**

- Pro-D \$2,000
- Travel \$2,000

- Collaboration \$1,500
- Resources/Supplies \$5,000/\$2,000

- Support Staff

## Wonowon School

**Mission:**

To promote responsible student leaders who work towards their own successes in all areas of life. We are honest, respectful, and contributing members of the community.

Goals	Rationale	What supporting educational programs, strategies and structures	What Pro-D are we engaged in?	What evidence are we collecting to support our progress on our goals?
<b>Intellectual</b>	<b>Literacy</b> <ul style="list-style-type: none"> <li>• To increase fluency and comprehension in reading and writing</li> </ul>	<b>Daily</b> <ul style="list-style-type: none"> <li>• Phonemic Awareness lessons - Heggerty</li> <li>• Jolly Phonics lessons</li> <li>• Daily reading</li> <li>• Instruction teaching of comprehension strategies</li> <li>• "Reading and Writing Power" Adrienne Gear</li> <li>• Reading buddies</li> <li>• Guided reading</li> <li>• Read alouds</li> </ul>	<ul style="list-style-type: none"> <li>• Coaching Literacy</li> <li>• Itinerants and school LA and ELL teacher</li> <li>• In-services and work shops</li> </ul>	<ul style="list-style-type: none"> <li>• Improved outcomes on district reading and writing assessments</li> <li>• BC Performance Rubrics Rubrics for Writing</li> </ul>

**Alignment of allocations with this goal**

- Resources/Supplies \$10,000
- Support Staff

## Wonowon School

**Mission:**

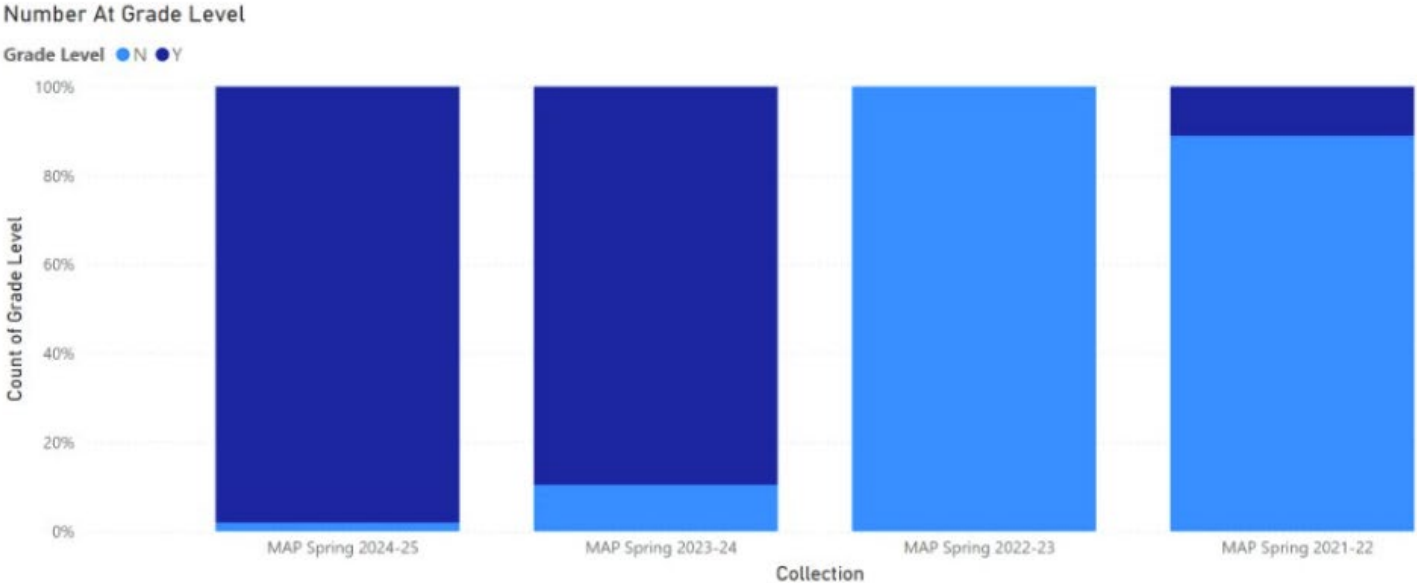
**To promote responsible student leaders who work towards their own successes in all areas of life. To become honest, respectful, and contributing members of the community.**

Goals	Rationale	What supporting educational programs, strategies and structures	What Pro D are we engaged in?	What evidence are we collecting to support our progress on our goals?
<b>Intellectual</b>	<b>Numeracy</b> <ul style="list-style-type: none"> <li>● To increase students' number sense, problem solving and knowledge of basic math facts recall.</li> </ul>	<b>Daily</b> <ul style="list-style-type: none"> <li>● Basic fact fluency</li> <li>● Math games</li> <li>● Number talks</li> <li>● Use math manipulatives</li> <li>● Daily number problem solving</li> <li>● Mathology</li> <li>● Mathletics</li> </ul>	<ul style="list-style-type: none"> <li>● Coaching support from district staff itinerants and school LA and ELL teacher</li> <li>● Mathletics</li> <li>● CWT Mathology – coaching</li> <li>● Math- Fun (games)</li> </ul>	<ul style="list-style-type: none"> <li>● Improved outcomes on district math and classroom assessments</li> <li>● MAP 4-9</li> <li>● Mathology K-3</li> <li>● Coding</li> </ul>

**Alignment of allocations with this goal**

- |   |  |
|---|--|
| <ul style="list-style-type: none"> <li>● Travel \$5,000</li> <li>● Pro D \$ 1,000</li> <li>● Collaboration \$1,600</li> </ul> | <ul style="list-style-type: none"> <li>● Resources/Supplies \$10,000</li> <li>● Support Staff</li> </ul> |
|---|--|

# Data





## Wonowon School

### Communicating our Plan

We included our PAC President in Planning Day

Presenting our plan at the November PAC meeting.

Publish the Framework on the school website.

Updated our Framework Brochure including graphics, pictures, and reduced the amount of written language.

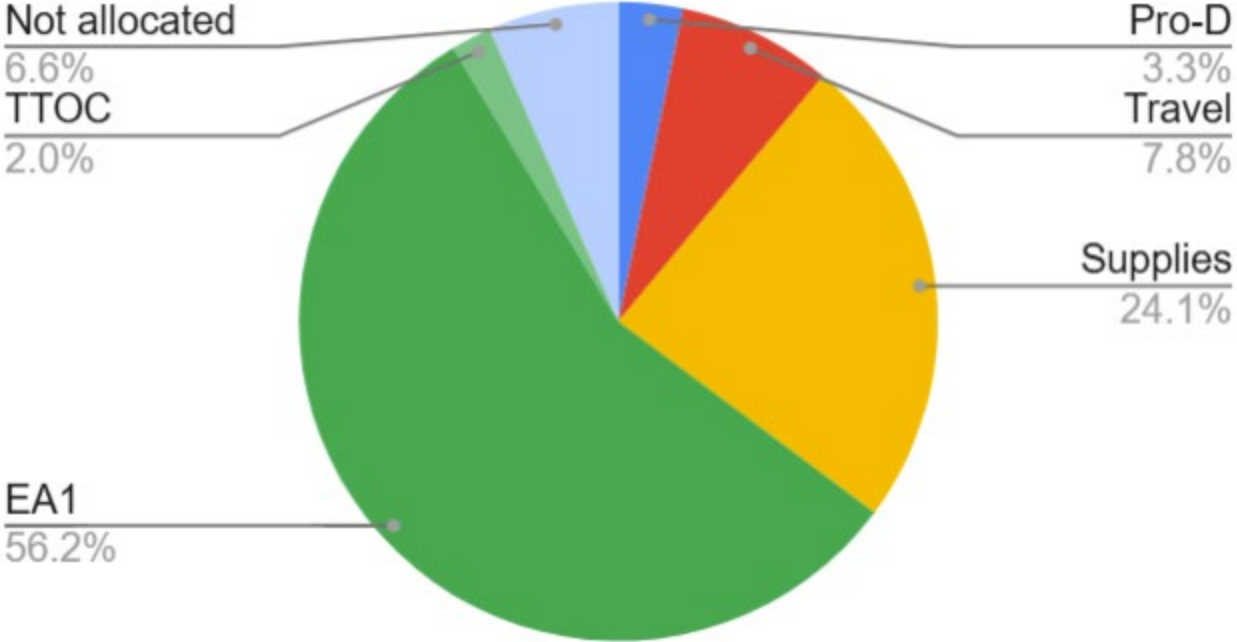
Teach the students the plan and have an open house so that they can communicate the plan to the parents.

Post Goals in the classrooms.

Present and discuss to our Grade 4-6 classroom and Grade 7-10 classroom the school plans.

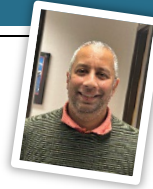
### Allocations of Learning Support Fund

# Wonowon Summary Percentage



## **OPERATIONS UPDATE**

**April 7, 2026**



### ***Facilities (Custodial, Projects, Compliance, Security)***

#### **Spring Break Task**

- NPSS Theatre Lift has been delivered and is in place. The training and commissioning will occur within the next 2 weeks
- Baldonnel Boy's Washroom Renovation was completed with all SD #60 staff
- Dr. Kearney Canteen was updated for flow, function and storage. It was a full demolition and reconstruction.
- Dr. Kearney - Room 119; roof drain and floor were replaced in this room
- Ecole Central Elementary received new flooring in six classrooms as well as their stairwells. The flooring was past life and due to replacement
- Taylor Elementary School received a new fire alarm
- Prespatou, Bert Bowes Annex and Charlie Lake School had accessibility ramps installed
- The renovations for the accessible washroom at Charlie Lake Elementary were completed with the installation of automatic door opening and reconfiguration of storage in the space.
- NPSS teachers' entrance had the stairs resurfaced for safety considerations as well as the handrails painted.
- Both CM Finch and Taylor Elementary received full lighting updates to LED light which should lead to future cost savings and energy efficiencies.
- Upper Pine School had the floor refinished; this entailed a new varnish and putting the faded lines back on.

### ***Health, Safety & Wellness***

- Fire Safety plans updated and put in SharePoint and at school locations.
- CPI training done for this year, if required, will do spot training for school EA's who may need it
- The annual fire extinguisher inspection by Brogan Safety has been completed over spring break per regulation.
- A safe work procedure for potable water is being developed for all sites; procedure is being developed in case water is not accessible at the sites
- The wildfire smoke memo is under review for new updates and will go out to the school community.

### ***Technology***

- Veeam and Backup Replication licenses have been renewed; backups are an integral part of the cybersecurity plan as having regular backups helps prevent cyber security ransom of data.
- Grandhaven server upgrade was successfully completed.
- For the Phase 8 VoIP update, eight network switches have arrived, and we are currently waiting for Telus to provide pricing.
- Approximately 90% of our school firewalls have been updated in accordance with IBM's cybersecurity assessment recommendations.

- Following the vulnerability report, we patched Virtual Center Appliance, which manages our 27 virtual servers.
- The air conditioning system in the data center's main server room must be inspected as the server is larger and requires more cooling and airflow.
- Significant price increases for technology are expected across the board.

## *Transportation*

- The five new buses approved in the 2025/26 Capital Plan are currently in Prince George undergoing inspection. We anticipate the buses will be delivered to Fort St. John by the end of April.
- Field trips are currently fully supported following the successful hiring of two spare drivers, ensuring full coverage without impacting regular routes.
- While two members of our driving staff have transitioned to other careers, their positions have been filled promptly, and there has been no disruption to service or routes.
- April 15, 2026, is **Bus Driver Appreciation Day**. We encourage everyone to take a moment to thank our bus drivers for the essential work they do each day to safely transport students.

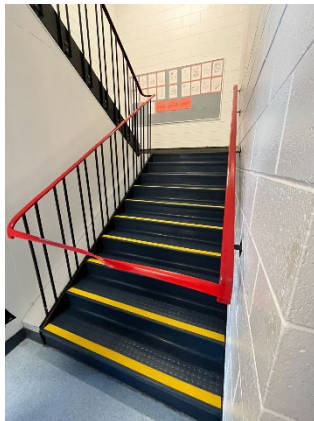
Dr. Kearney Canteen



Baldonnel Boy's Bathroom



Ecole Stairs



Upper Pine Gymnasium

