

**SCHOOL DISTRICT #60 (PEACE RIVER NORTH)**  
**COMMITTEE OF THE WHOLE**  
**“REGULAR” MEETING MINUTES**  
MONDAY, FEBRUARY 2, 2026  
2:30 P.M.

*Present:* Helen Gilbert, Chair, Board of Education  
Ida Campbell, Trustee  
Bill Snow, Trustee

Stephen Petrucci, Superintendent  
Wade Hart, Assistant Superintendent  
Jarrod Bell, Director of Instruction  
Carleen Andrews, Director of Instruction  
Angela Telford, Secretary Treasurer  
Leah Reimer, Executive Assistant

*Media/Guests:*

Gwenn Bourdon  
Deborah Johnson  
Ruth Albert, Moose Media

*Regrets:* Madeleine Lehmann, Trustee  
Nicole Gilliss, Vice Chair  
David Scott-Moncrieff, Trustee  
Thomas Whitton, Trustee

---

## Education

### **Education Update**

*Stephen Petrucci, Superintendent*

#### Framework Presentations

#### **Dr. Kearney Middle School**

*Chris Nock, Administrator*

*Tanya Braun, Vice-Principal*

- The administrators presented and answered questions from the trustees and district staff
- The board thanked the staff of Dr. Kearney for their role and support in light of the recent student tragedies and offered their continued support

- Administrators were thankful for the support from the district as well and the resources that were available (ie. Safer Schools Together, extra staffing supports, etc.)

### Student Voice

- Two students shared on the Mosaic Art project being planned for the outside of the school
- Two students shared on the Go Cart project they are a part of

### **FESL Review**

#### *Duncan Cran Elementary School*

- Suggestion to provide a key or spell out any acronyms contained in the document (eg. W.I.T.S. Walk away, Ignore, Talk it Out, Seeking Help)
- Like that it's self-reporting as to how the students are feeling on an ongoing basis
- MDI self-regulation is up for 2024-2025...nice to see
- Appreciate the tracking of cohorts over time and seeing how things are going, recognizing Duncan Cran has a high degree of transiency. When following for the three years, there are improvements.
- There is a gap between fluency and comprehension
- Maker Space – 100% of their groups are getting access to hands-on activities
- FSA literacy took a bit of a dip but other years it's been stronger
- FSA numeracy went up significantly
- Trustee Campbell – PAC has worked hard at getting more members and they are succeeding; they've been getting good communication out.

#### *Ecole Central Elementary*

- Made a lot of progress in Goal 1: Careers/Skill Development
- Looking for clarification of the third statement under Data Analysis - Literacy
- FSA and Numeracy...they are one of the district leaders at the elementary level.
- Not seeing obstacles with reading/writing considering it is being taught in French
- Exceed the school district average regarding the Number of Adults at School Who Care
- High results in esteem and optimism
- Getting excited about their Quebec trip

## **Governance**

### **Board Meeting Follow Up Questions/Discussion**

#### *Helen Gilbert, Board Chair*

- *None*

# Operations

## Operations Report

*Angela Telford, Secretary-Treasurer*

- HVAC system at ELC is specific to our space at the Pomeroy Sports Centre
- NPSS water main broke over Christmas Break. There was initial mitigation and then it was fixed on January 30.
- 8 classroom addition looks good, they've moved in and they are happy with it
- Wonowon replacement school – the architects will be here Friday. Once they've reviewed and signed off, we will look at getting an Occupancy Permit; the April 7, 2026 COTW meeting will take place there.
- Technology team did an excellent job at Wonowon and Dr. Kearney Middle Schools. You can see in the 8 classroom addition on the tour today, everything was connected and working
- Discussion around the ongoing shortage of mechanics, possibly due to the salaries; salaries have already been included in labour market adjustments



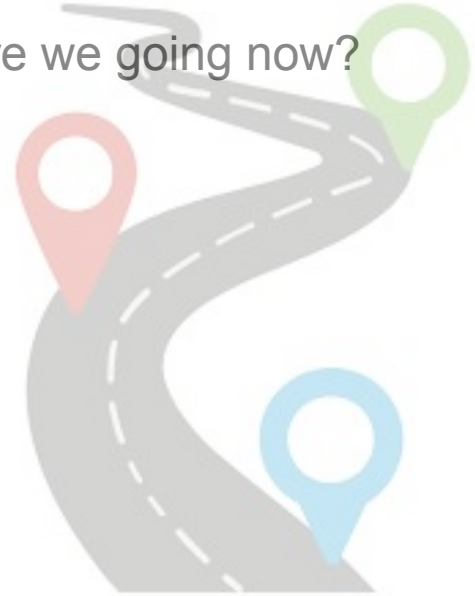
# **FESL Presentation**

## **February 2, 2026**



# Planning Day

- Focus on where are we, how do we know, where are we going now?
- Reviewing data and revising the FESL
- CB-IEP roll out
- Collaboration, Communication

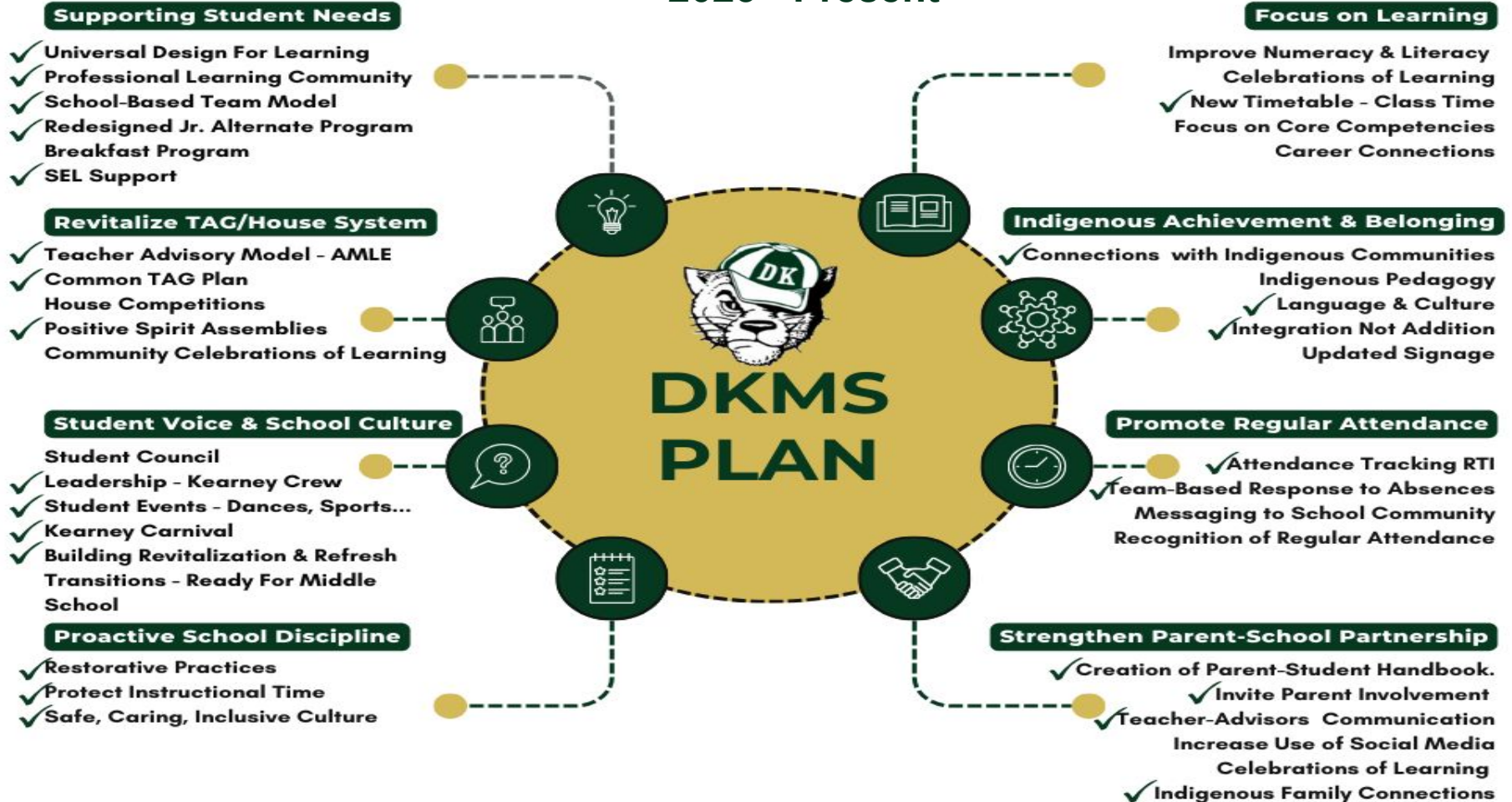


# Framework Goals

- Goal 1:** By June 2026, Math and English achievement scores will increase to 60% Proficient or Extending across all grade levels.
- Goal 2:** By June 2026, we will reduce chronic absences by 50%
- Goal 3:** By June 2026, we will increase the high rating of school climate and belonging to 50% as measured by the MDI.
- Goal 4:** By June 2026, we will increase the high rating for academic self-concept to 60% as measured by the MDI.
- Goal 5:** By June 2026, students in Grade 7-9 will demonstrate increased awareness of local and global career opportunities.



# 2023 - Present

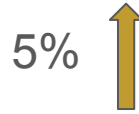


# Learning Evidence - Where Are We?

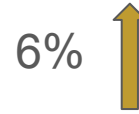
TAG **Absence Rate\***



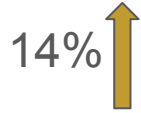
Math **Average Proficiency**



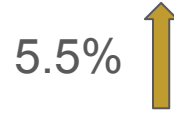
**School Belonging MDI**



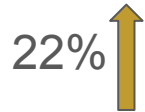
FSA **Literacy On-Track**



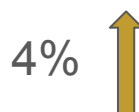
English **Average Proficiency**



FSA **Numeracy On-Track**



**School Climate MDI**



\*YTD



# Key Challenges

## → Achievement Gaps in Math & English

- ◆ T1 Cohort data improved over T3 2024/25 but remains below target

## → Attendance

- ◆ YTD data suggest strong trend toward meeting target

## → Belonging, Climate and Academic Self-Concept (MDI)

- ◆ 2024/2025 data suggests minor decline
- ◆ SLS and MDI surveys in progress



# Next Steps: 2026-2027

## → Targeted Literacy & Numeracy Supports

- ◆ Intervention Grade 7-8
- ◆ Bridging Grade 9
- ◆ Vertical teaming
- ◆ Tutorials

## → Attendance Strategy

- ◆ 'early-warning' RADAR (regular absenteeism detection and response)
- ◆ TAG-Family communication
- ◆ Wraparound supports for Grade 9 - YCWs

## → SEL & Belonging

- ◆ TAG focus on SEL
- ◆ Regular student "pulse" surveys, increase student voice

## → Inclusion Strengthening

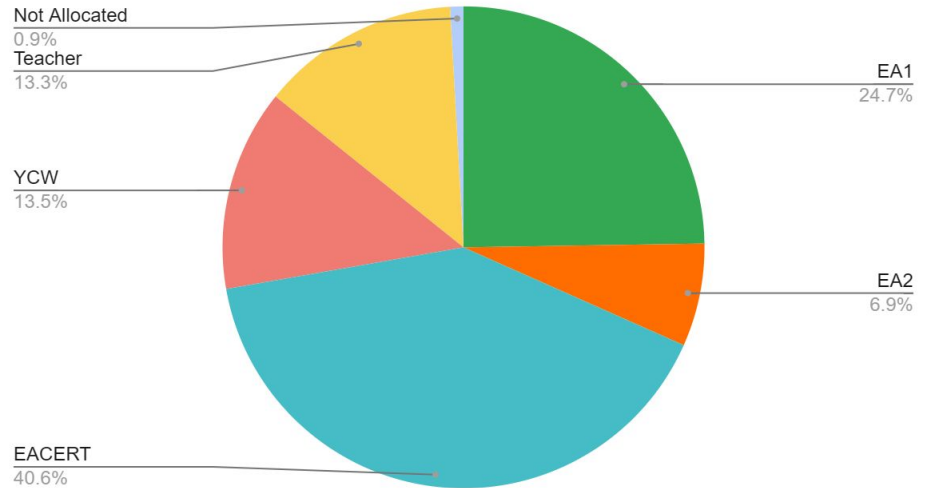
- ◆ Focus on universal Tier 1 supports
- ◆ Data review in all PLCs



# Learning Support Fund

- ❖ Transparency - spending planned in collaboration with SBT.
- ❖ Enhancing SEL - SEL Teacher, YCWs
- ❖ Strong classroom supports
  - EAs, YCW

Dr Kearney Summary Percentage



# Student Voice



