

SCHOOL DISTRICT #60 (PEACE RIVER NORTH)
COMMITTEE OF THE WHOLE
“REGULAR” MEETING MINUTES
MONDAY, DECEMBER 5, 2022
1:30 P.M.

Present: Helen Gilbert, Chair, Board of Education
Madeleine Lehmann, Vice-Chair
Ida Campbell, Trustee
Nicole Gilliss, Trustee
Bill Snow, Trustee
Thomas Whitton, Trustee

Stephen Petrucci, Superintendent
Angela Telford, Secretary Treasurer
Leah Reimer, Executive Assistant

Media: Michele Wiebe, PRNTA President
David Lueneberg, Alaska Highway News

Regrets: David Scott-Moncrieff, Trustee

Education

Education Update

Stephen Petrucci, Superintendent

Framework Presentations & Departmental Reports

CM Finch Elementary School

Troy Lang, Administrator & Ginger Alexander, Vice-Principal

Prespatou Elementary Secondary School

Glen Longley, Administrator & Margaret Wiebe, Vice-Principal

Technology Services

Laurie Petrucci, Vice-Principal Innovation & Ed Tech

Taylor Elementary School

Nancy Maxfield, Administrator

Leah Austin, Teacher

Patricia Law, ISSW, EA & Meals Program

Governance

None

Human Resources

None

Operations

Operations Report

Angela Telford, Secretary-Treasurer

- Upper Halfway completion date is the summer of 2023, however we're experiencing delays so that may change
- Inflationary pressures materializing in regards to the project? Ministry has incorporated a lot into the budget. Confident it will be built within the budget
- MMMCS boiler system – issues with maintenance and supply chain issues and shortages on parts due to specific parts needed
- Recruiting sign is right across the street from Home Hardware
- Class 2 and air brakes is needed for bus drivers...cost is around \$1,900
- SDS Integration meeting – we have SDS at each location doing absence tracking now

Governance

C.M. FINCH

FRAMEWORK FOR ENHANCING LEARNING

2022-2023

RESPECT + RESPONSIBILITY = HAPPINESS





WELCOME TO OUR SCHOOL

CM Finch is a vibrant and caring place. There is a strong sense of community among the families and staff at our school. We strive to maintain a positive school climate. We promote the involvement of our community, strong leadership across our school and mentoring between staff and students.

Go Falcons!

FOCUSING ON STUDENT WRITING

The main school wide focus for our FESL this year is continuing to work at improving student writing. Our school data has shown us that our writing skills are an area that require more attention and we would like to see improvement in.



LANGUAGE ARTS

01

To have students with literacy related IEP goals meet them.

02

Intermediate students: To have 80% of students score a C+ or higher in their final Report Card in ELA.

03

Primary students: Meet or Exceed Expectations in ELA on their final Report Card.

04

Intermediate and primary students: develop strong writing skills.

Target - to have 80% meet or exceed expectations in writing.

Target - to have the school's percentage of grade four students perform at meeting or exceeding at or above the same level as the district or province on FSA in writing.

05

To have students who are on an Annual Instruction Plan to meet their goals.

07

Primary and intermediate students: meeting or exceeding the School District's Reading Assessment at their appropriate grade level.

06

Kindergarten students: show strong phonemic awareness.
Target- 80% of students in quartile 3 and 4 on phonological assessment.





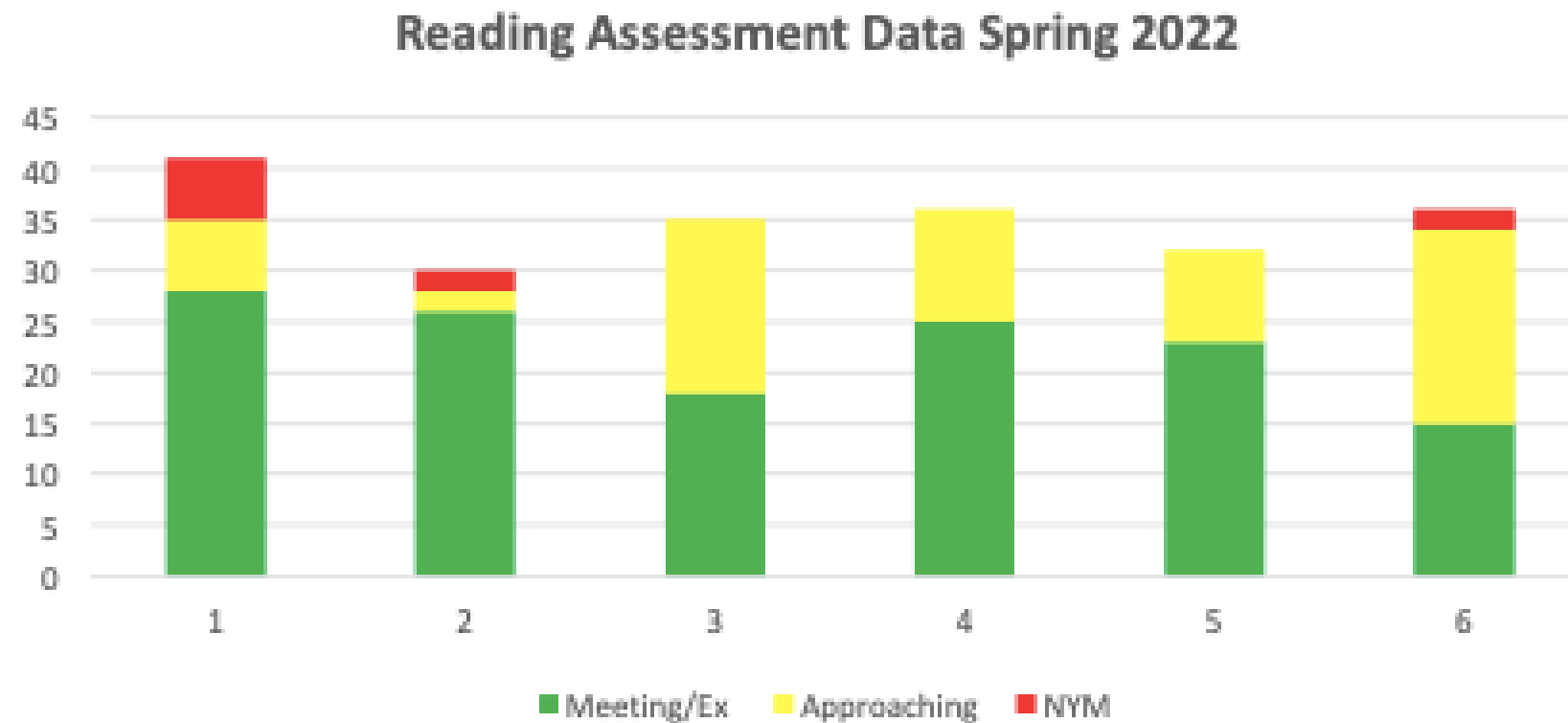
PERFORMANCE INDICATORS

Phonological Assessment.
QCA results
Cold Write Results

PM Results
Read 73 Results
Report Cards

Reading Data 2021/22

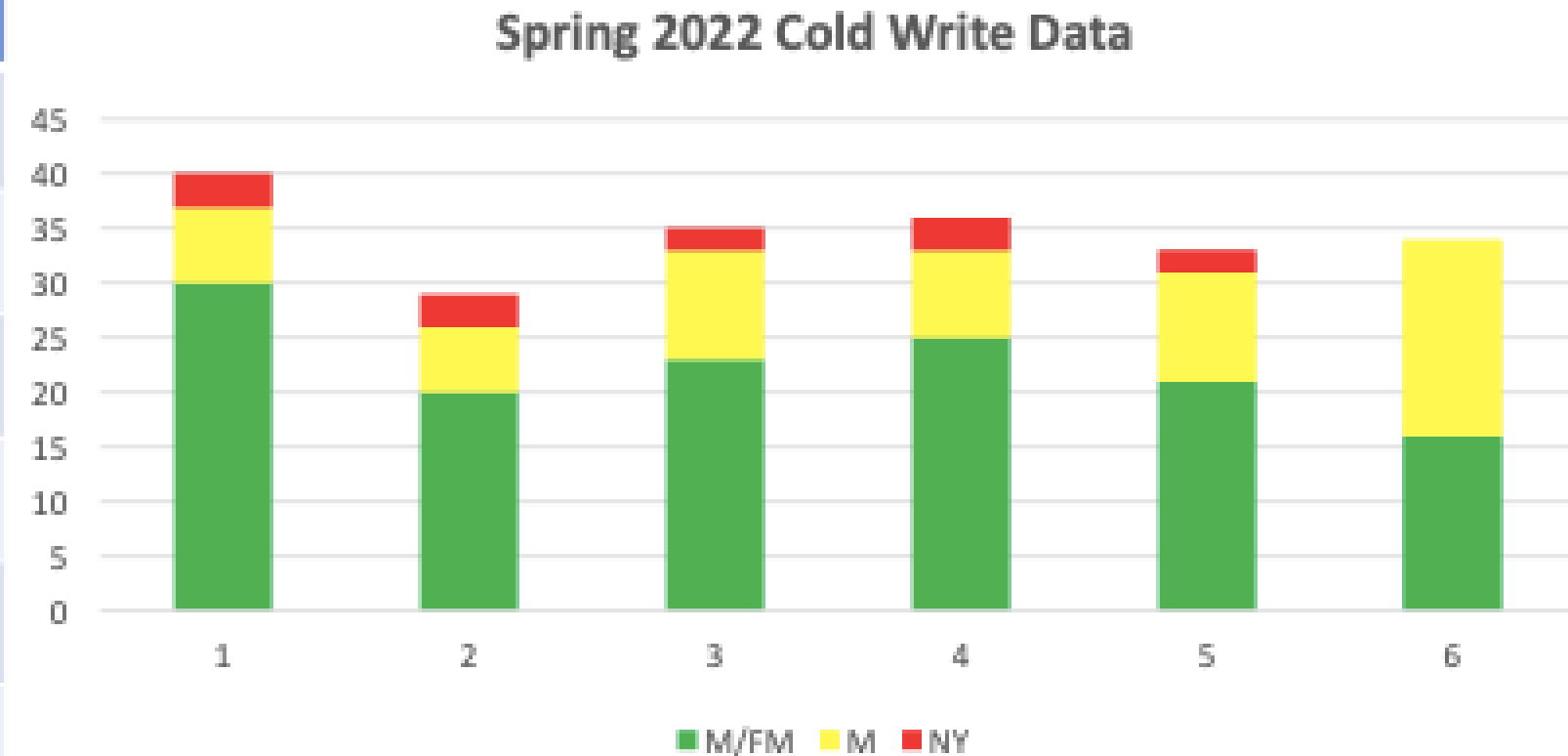
Grade	Meeting	APP	NYM
1	28	7	6
2	26	2	2
3	18	17	0
4	25	11	0
5	23	9	0
6	15	19	2



- **64% ME 31% Approaching 5% NYM**
- **Indigenous Student Achievement LA- 63% FM/ 27% Developing/ 9% Emerging**
- **Indigenous Student Achievement mirror overall school achievement data**
- **Low Achieving Cohorts we need to be aware of and support**
- **We need to continue to support growth in all achievement levels**

Writing Data 2021/22

Grade	M/FM	M	NY
1	30	7	3
2	20	6	3
3	23	10	2
4	25	8	3
5	21	10	2
6	16	18	0



- **58% ME 29% M 6% NYM**
- **Indigenous Student Achievement LA- 63% FM/ 27% Developing/ 9% Emerging**
- **Indigenous Student Achievement mirror overall school achievement data**
- **Need to Continue to Put Though Effort and Focus into our Literacy Skills**
- **Continue to Challenge all Learners to Improve**
- **How can we engage families to encourage literacy skills at home?**



Smoking Pencils Pen Pals Writer's Cafe Heggerty Adrienne Gear

Words their way Authentic Writing 20 mins daily Peer Reading

Weekly Writing prompt on SeeSaw Free Writing with a prompt

Increase and promote indigenous titles



Talking Tables Great Leaps Reading Recovery Smart Learning

District Coaching RAZ Kids Newsletter ideas CWT Program

Personal Spelling dictionaries 6 traits of writing bins Book Fairs

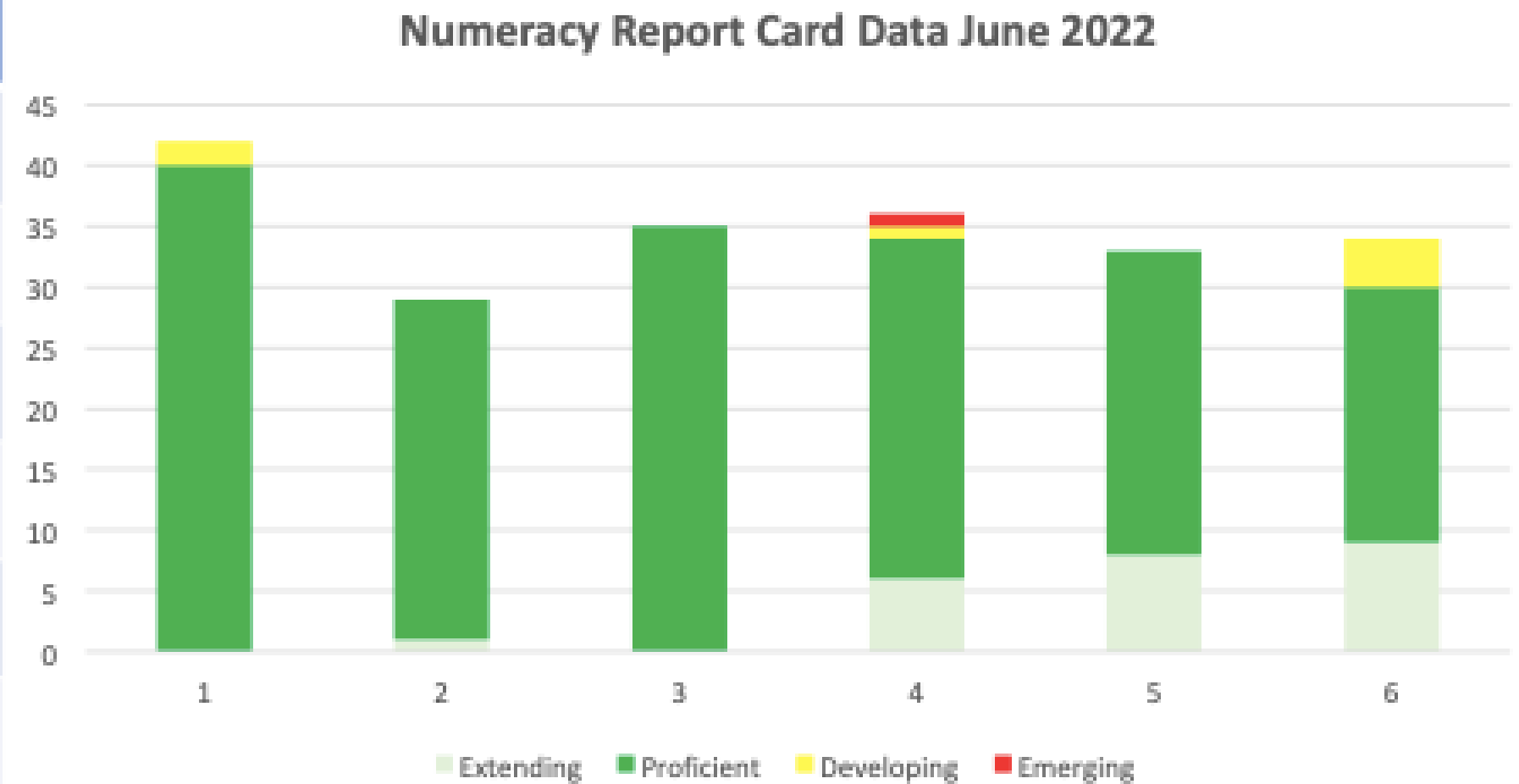
100 Easy Lessons

Ready Set Learn

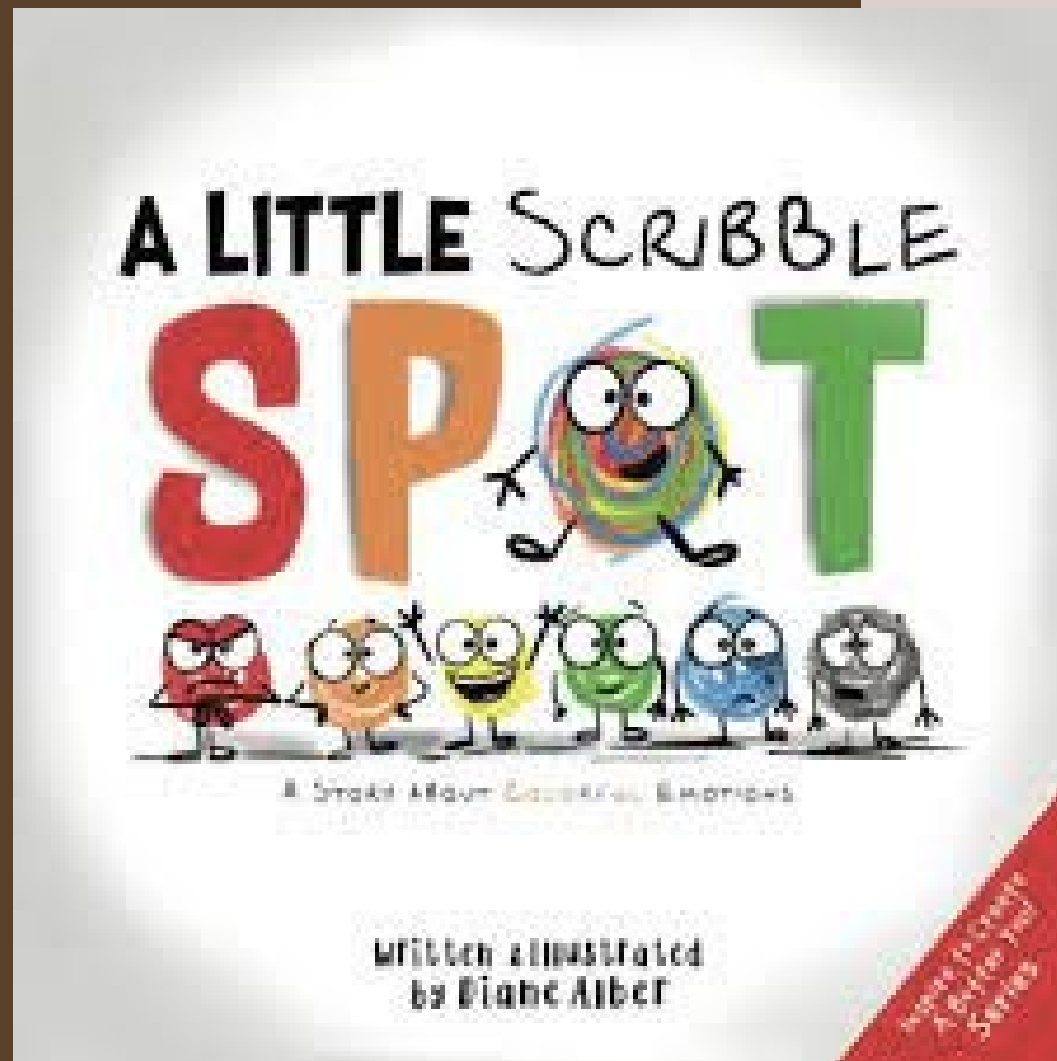
Staff Collaboration

Numeracy Data 2021/22

Grade	EXT/PRO	DEV	EM
1	40	2	0
2	29	0	0
3	35	0	0
4	34	1	1
5	33	0	0
6	30	4	0



- **96 % EXT/PRO 4 % DEV/EM**
- **Indigenous Data Mirrors School Wide Trend: 88% EXT/PRO 4% DEV/EM**
- **We are continuing to see a benefit from the FESL Focus on Numeracy in our teaching and learning resources.**
- **How do we continue to promote strong numeracy skills to enhance problem solving skills?**



SOCIAL EMOTIONAL LEARNING

Respect + Responsibility = Happiness

Components of PBIS will be used in work around the Code of Conduct. The Code of Conduct will meet the standards set out in the Safe Orderly and Caring Schools document. School staff reviewed the Code of Conduct on the planning day in September.

Leadership Club Bucket Fillers Inter-murals

Buddy Projects Monthly Virtues

Community Projects Canteen Helpers

Zones of Regulation Spirit Assemblies



As a team we deal with issues that arise, teach positive behaviours, and build consistent staff language and approaches to deal with behaviour. We review concept of rising expectations at assembly and through newsletters.



Prespatou - FESL Presentation - 2022



Extending



Emerging



Planning Day - Prespatou 2022

- **Board Presentation - Morning**
 - Reading
 - Numeracy
 - Attendance, Discipline, Sel
- Guiding Questions:
 - How do we improve student learning?
 - What are we doing well?
 - Where are we going?
 - How do we get there?
 - How do we work together?
 - How do we utilize the support that we have?
 - How do we measure this?
- **Round Table Discussions - Afternoon**



Parent Involvement

#1 - Ran A Mini Planning Day With The PAC

#2 - Sent Home School Goals For Feedback -

What do we need to improve?	What should we be doing?
-----------------------------	--------------------------



Goals

Intellectual Goal 1 - Reading - Improve Students Reading and Comprehension

Success - **Changed To**

Reading - Improve Students Reading and Comprehension Success

Social/Emotional Goal 2 - Students will learn Social and Emotional skills to support behavioural expectations in the classroom and on the playground - **Changed To**

Students will learn Social and Emotional skills to become better social citizens as they move through school and life.

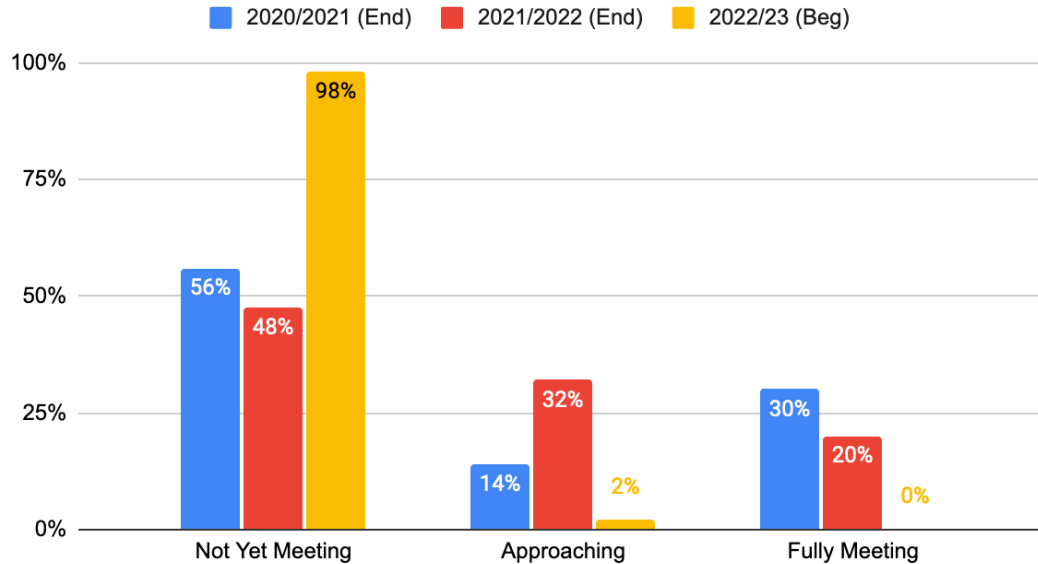
Career/Skills Goal 3 - A higher percentage of students will complete the graduation program. **Changed To**

Students will work on developing an understanding of the connection between school and real-world career opportunities.



Reading Data

Primary Reading Data



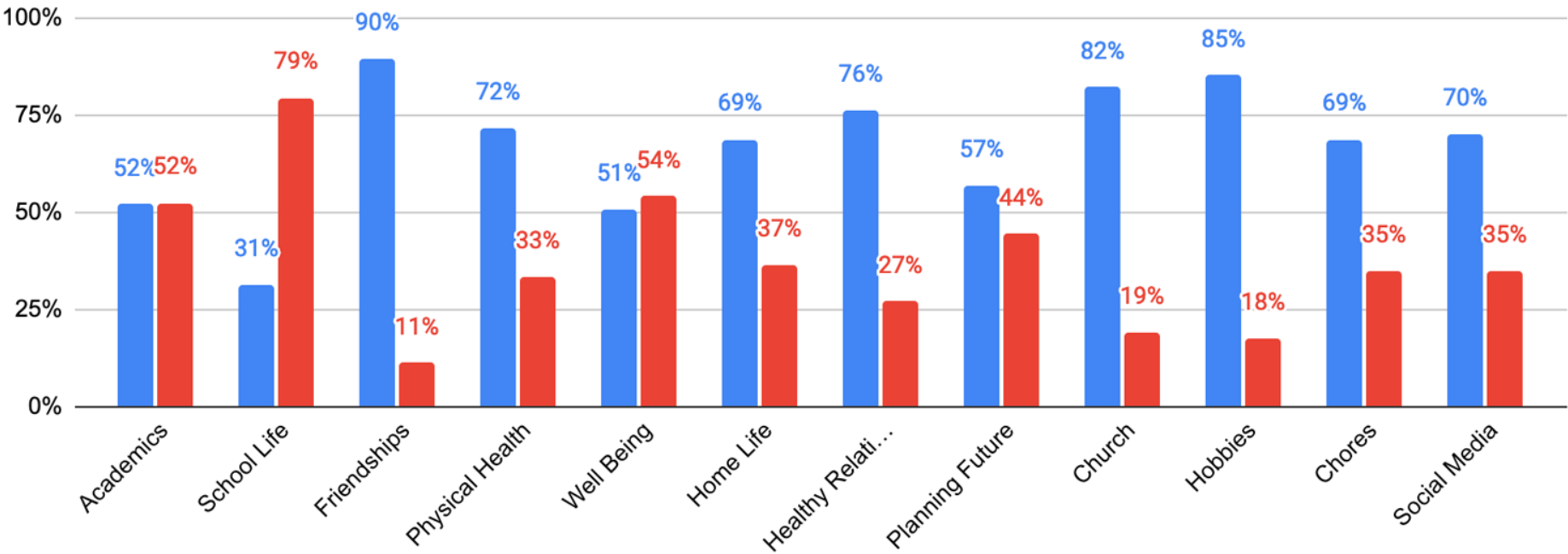
98% Not Yet Meeting

- Reading Groups
- Collaboration



Secondary SEL Survey

Thriving Surviving



HHT - Examples

Herbal Medicine

CyberSafety

Stress Management

Nutritious Diets

Cell Phone Dangers

Student Comments:

- I like the topic choices
- Teachers are explaining it well
- Would like to see one week activity and one work week. Four in a row makes me want to go to sleep.
- The activity week seems to just have started and then it is the end of the week already.
- I would like to see students having input to what the work week topics are



Learning Support Fund

- Collaboration
- Reading Supplies
- Laptops - Google Read and Write
- Reading Support Teacher
- PWIM Resources
- Reading Supply Cupboard

	Monday	Tuesday	Wednesday	Thursday	Friday
8-9:00	JD K HW P	JD K HW P	JD K HW P	JD K HW P	JD K HW P
9-10:00	HW G ND T	ND T HW G	ND T HW G	ND T HW G	ND T HW G
10-11:00	HW G JD K	ND T JD K	ND T JD K	ND T JD K	ND T JD K
11-12:00	HW G ND T	LD P HW G ND T	LD P HW G ND T	LD P HW G ND T	LD P HW G ND T
12-1:00	JD K HW T	JD K HW T	JD K HW T	JD K HW T	JD K HW T
1-2:00	JD G ND	JD G ND	JD G ND	JD G ND	JD G ND
2-3:00	ND K JD G	ND K JD G	ND K JD G	ND K JD G	ND K JD G
3-4:00	ND K JD G	ND K JD G	ND K JD G	ND K JD G	ND K JD G



What Next?

- Moving Our Reading Plan Into Intermediate
- More Consistent Instruction - Heggerty
- Tracking Our Reading Data Differently
- Careers - Provide Opportunities - Balance
 - More Open-Minded - Criminology/Textiles



FESL Presentation Guidelines

Please prepare a **15-minute presentation via a maximum of 10 slides**. There will be time for questions after. The trustees will be given your Framework document and Learning Support Fund budget in advance. The presentation should **clearly respond to the following questions**:

1. **Planning Day** - What was the shape and outcome of the day? How were parents engaged?
2. What **learning evidence** are (will you be) you reviewing and presenting? What have you noticed (**positive and worrisome**)- either last year or this year?
3. What are your Framework **goals**? How do they link to the learning evidence? How are you paying particular attention to success for your **Indigenous students**?
4. **Learning Support Fund** - Given the learning evidence as well as individual and class needs (ie. Class reviews, IEPs, etc.), what are the key targets of your allocation this year? How does it encompass learning interventions for ALL students and take into account the strengths/needs of your staff? What key strategies will be utilized?
5. What are you **celebrating**?
6. How is your FESL being communicated to your **school community**?



Taylor Elementary Framework for Enhancing Student Learning Presentation - December 5th, 2022

- Tiger News - <https://bit.ly/3zbAVHc> - weekly live newsletter
- Website - <https://taylor.prn.bc.ca/>
- Facebook page - <https://www.facebook.com/sd60taylor>



MISSION STATEMENT

"The mission of our school community is to Educate, Inspire and Empower all students."

Taylor Tiger Song



Taylor School - What's New?

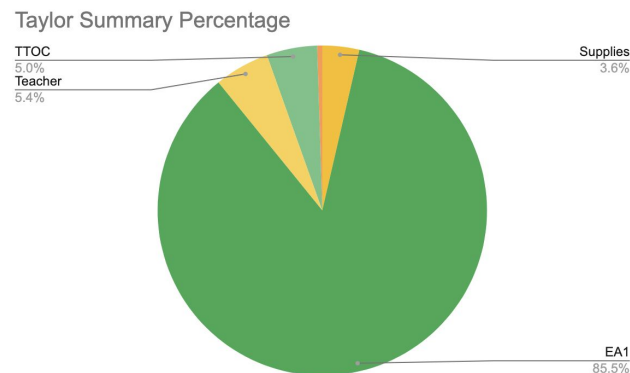
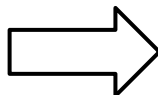
- **Literacy**
 - Less Summer slide
- **Communication**
 - Teacher platforms - DOJO & See Saw
 - DOJO - School Story
- **Updates to the school -**
 - Classroom renovations - Rooms 1 & 2
- **Technology**
 - Ipad upgrade - Mathletics & student portfolios
- **Social and Human Development**
 - Spirit Activities - Mixed grades
 - Taylor Spirit Wear - new logo
- **Indigenous Support Worker Role**
 - Food security - Breakfast program/Snack
- **Seamless Day Program Pilot/Changing Possibilities**



Framework Planning - Process - Ongoing

- School Planning day - September -
 - Learning & listening & connecting
 - Look at current school data
- Weekly School Based Team Meetings
 - Addition of Framework updates and planning
- Staff Meeting - Framework updates and ongoing planning with staff

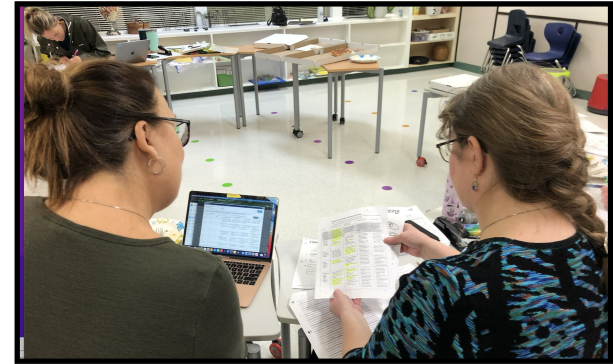
Teacher time for Reading intervention and TTOC time to support Framework goals as well as EA time.



Literacy Goal

- Improve Reading & Writing fluency & comprehension in all grades

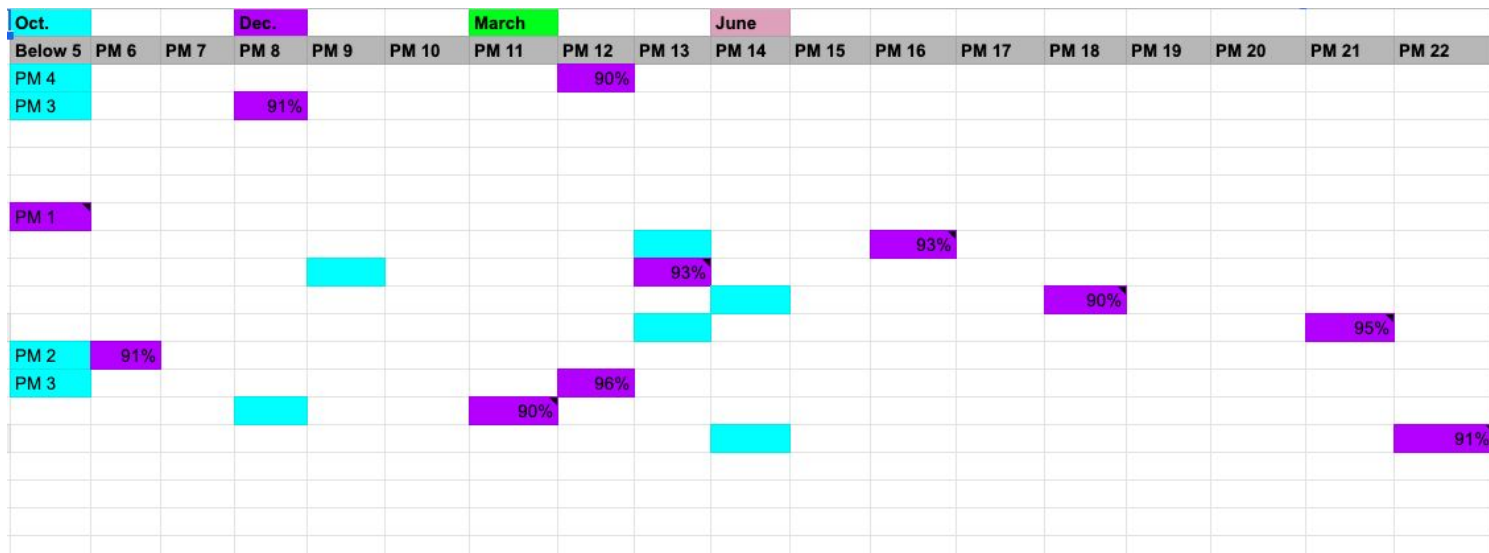
- Reading Data Walls - Ongoing & live learning evidence & follow-up in classroom instruction
- “At risk readers” - Grades 2 & 3 - Collaboration and support team approach - Data wall - Collaboration between Primary teachers & LA & administration.
- Heggerty K/1 Pilot
- Grade 1 Reading data wall - Grade 1 teachers update on regular basis
- Yellow readers - 4-5 Guided reading lessons a week.
- Home Reading Tips for Primary parents
 - <https://bit.ly/3GZ4gsU>
- School-wide Home Reading Challenge - February
- SMART Learning strategies
- Writing Collaboration Group



Collaborative Marking of Writing Samples

Grade 2-3 Reading Data & Response to Intervention Plan

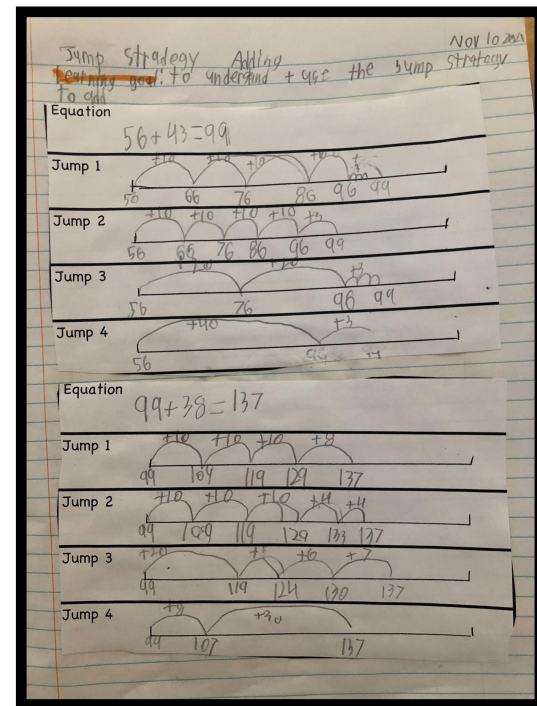
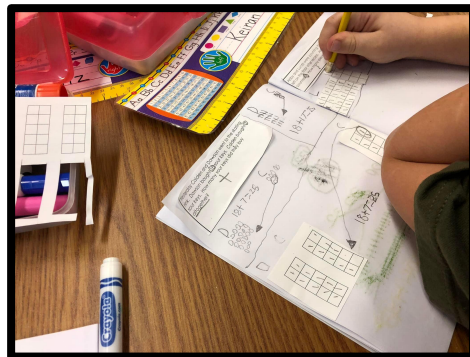
- Reading Intervention Support Teacher - 0.2 - will be requesting for 2022-2023 school year
- Working as a Primary team to support “At Risk” readers - Classroom teachers, LA/RI teacher, Admin,
- Goal - 4-5 guided reading lessons per week for “At Risk” Readers.
- Review reading record practices and guided reading lessons - create consistent language



Numeracy Goal - *Improve Number Sense in all grades*

- Assess classroom access to math manipulatives
- MAP data - Grades 5 & 6 required by District
- MAP is used on a regular basis as a teaching tool - Zoom in features used
- Problem solving and strategy instruction focus in daily math lessons.
- Explore Primary MAPS for assessment & teaching
- Mathology Pilot Inquiry

Teaching through
problem solving



Teaching the JUMP
strategy - modelled in
student interactive
notebook

Human & Social Development Goal - *Improve student relationship problem solving skills.*

- Student Leadership Club
- School-wide Spirit Activities
 - monthly
- WITS Program
- EASE lessons
 - All classes
 - Modelled by SEL worker
- Breakfast Program & Lunch Club
- Community events/access to facilities
- Working on inquiry idea - Gratitude?



Indigenous Learning & Other Supports

- Daily Breakfast & Morning Check-in (all welcome)
- Literacy Support in classrooms and in small groups
- Cultural activities/lessons in classrooms
- Lunch club - by class this year
- Lessons embedded in classroom teaching
- Continue to monitor our Indigenous student data
 - Question - Improve attendance - continue to build relationships



Breakfast Program

It Takes a Team....Thanks PAC & Taylor Community

- Milk Program
- Hot Lunch Program/Popcorn Day
- Fundraising -
 - Helped to sponsor Dance Residency
 - Ski Trip
- Fundraising
 - Home reading books
 - Sports equipment
- Walk to Breakfast
- Access to Taylor facilities



**PAC bought new
benches for our
playground**



**Family Night - Book Fair
PAC Volunteers**

Taylor School Data - [Data Slides](#)

- [FSA Literacy Data - 2 years - Taylor](#) *(Check link for Indigenous data)*
 - **Literacy 2021-2022** - Total Students - 12 - **On Track and Extending - 74%**
 - **Literacy 2022-2023** - Total Students - 19 - **On Track and Extending - 79%**
- [FSA Numeracy Data 4 years - Taylor](#) - *(Check link for Indigenous data)*
 - **Numeracy - 2019/2020** - Total Students - 21 - **On Track and Extending - 71%**
 - **Numeracy 2020/2021** - Total Students - 13 - **On Track & Extending - 55%**
 - **Numeracy 2021/2022** - Total Students - 12 - **On Track & Extending - 75%**
 - **Numeracy 2022-2023** - Total Students - 19 - **On Track 84%**

What's Next.....

- SEL inquiry combined into Framework goal.
 - Increase student voice opportunities & plan inquiry
- Numeracy - look closely at current school data and resources

Barriers/Questions

- BASC - limited numbers - cost of program.

**View from the
top of the
Taylor School
Hill**

